

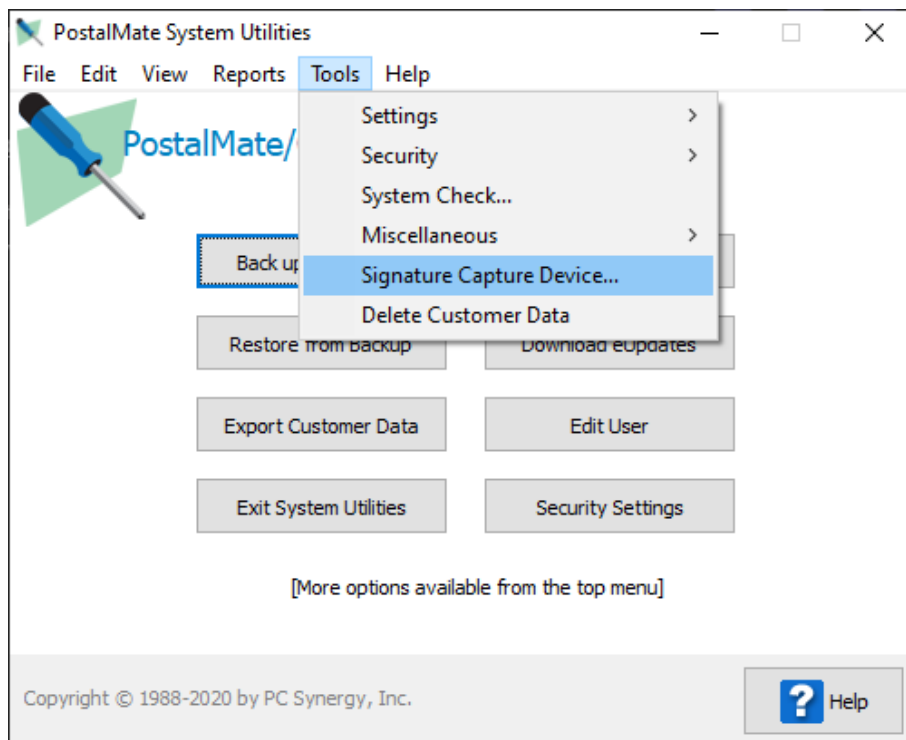
Standard HSB Topaz signature pads are supported, such as:

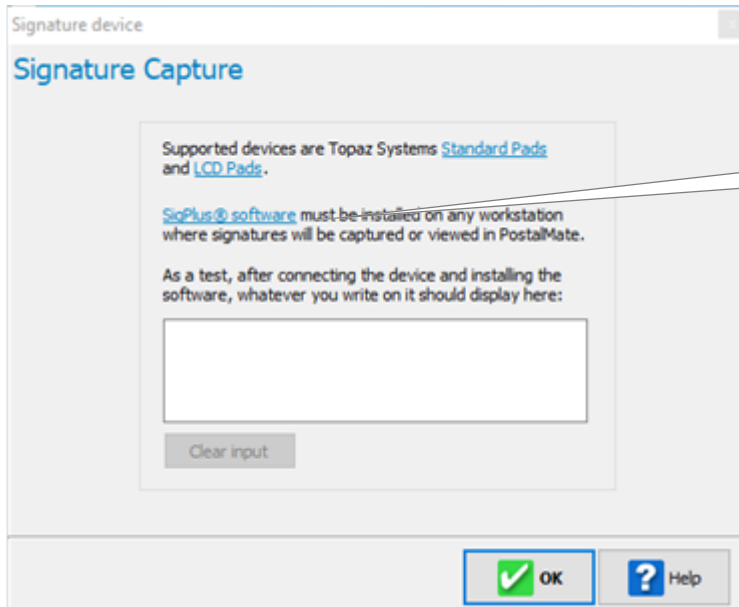
Topaz T-S460

Topaz T-S461 SigLite 1x5 pads

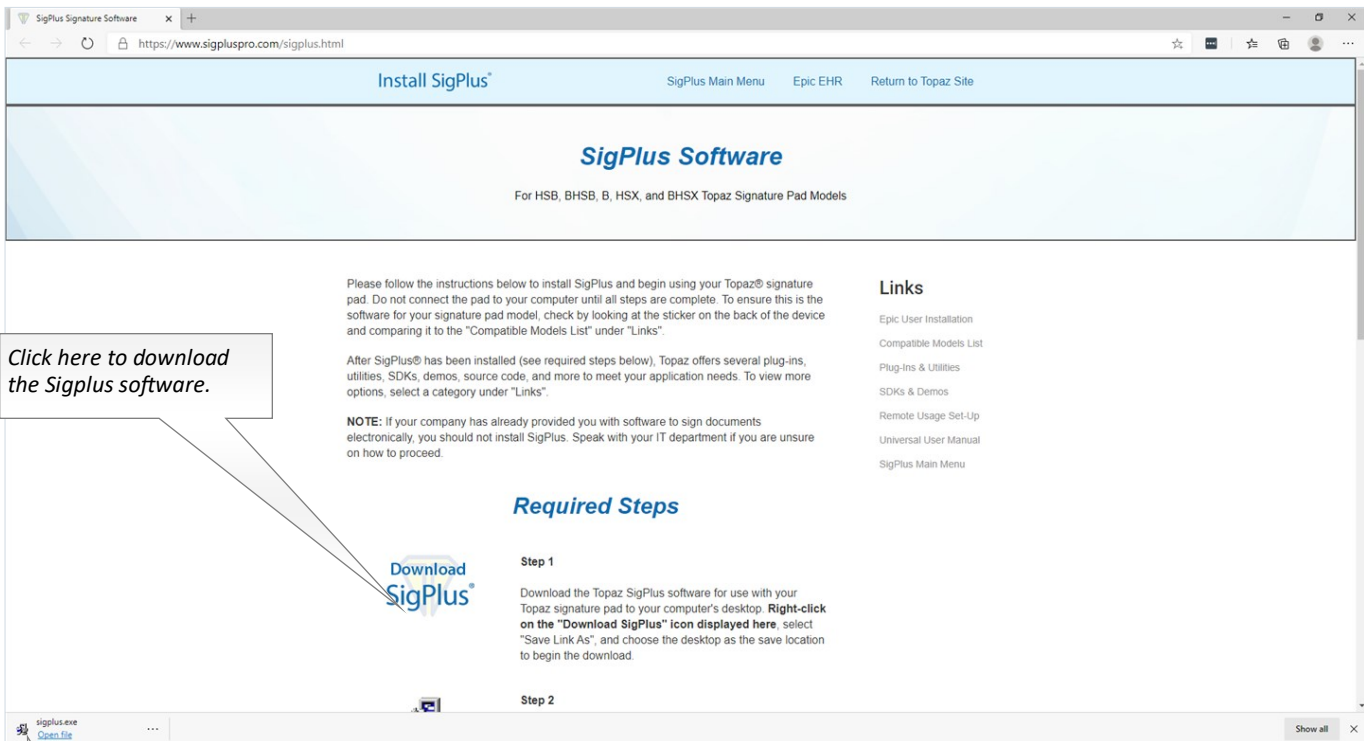
Set up the Topaz signature device

- Plug in the signature pad device to an available USB port on your computer. If you use a USB hub, make sure to use a **powered** USB hub. Turn the device over and look for the Model number. Keep this handy as you will need it when installing the driver.
- Open **PM Utilities**
- Choose **Tools > Signature Capture Device...**





Click here to go to the Topaz SigPlus download page.

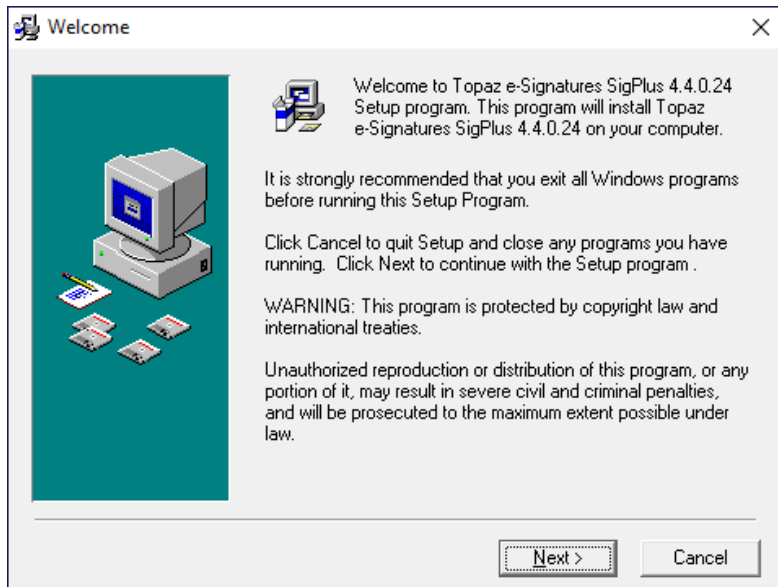


Click here to download the Sigplus software.

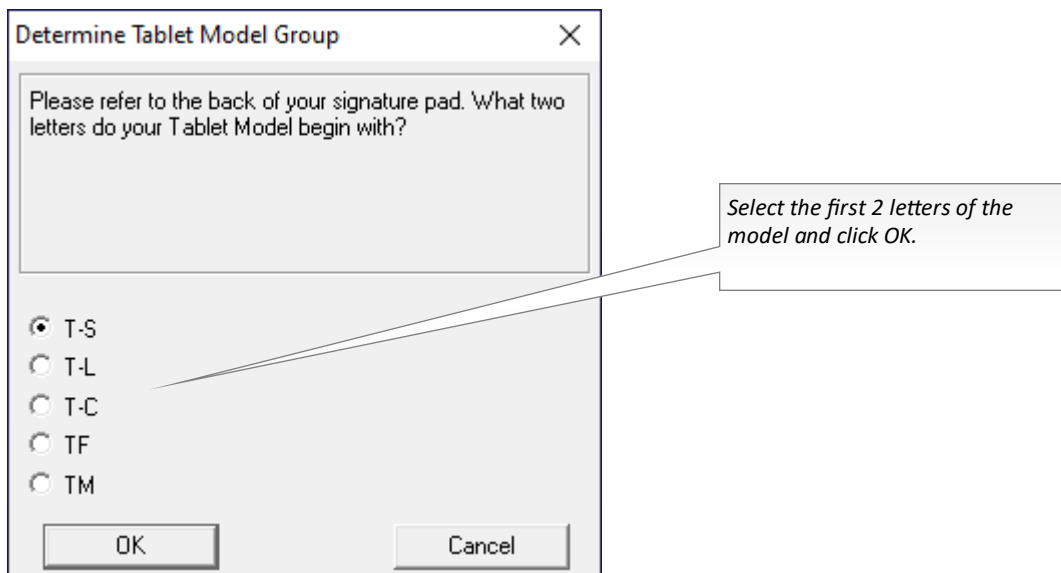


Click here to run the install.

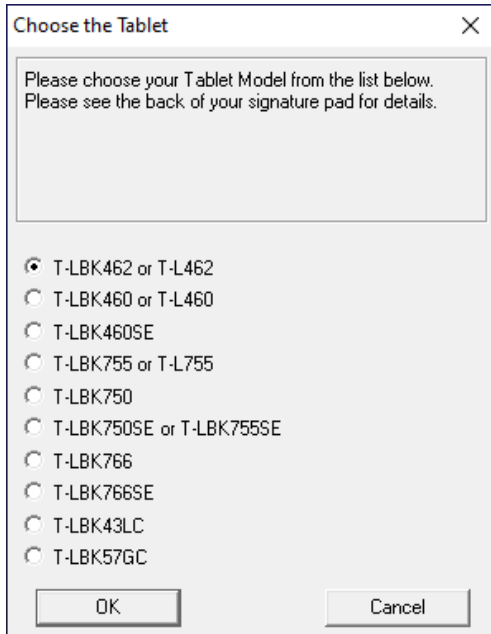
Follow the onscreen instructions to install the specific driver for your device.



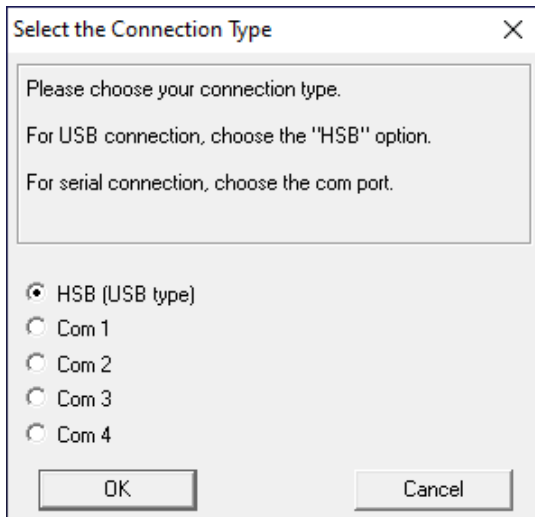
Look at the model number on the back of the device.



Choose the tablet model from the list and click **OK**.



Choose HSB (USB type) and click **OK**.



Follow the screens to complete the installation. You do **not** need to add the demo shortcut to your desktop.

Test Signature Capture

Stay in **PM Utilities**.

Go to **Tools > Signature Capture Device...**

As a test, write something on the signature pad device. Whatever you wrote on the device should show up on the screen.

Click **OK**. Exit out of **PM Utilities** and re-launch PostalMate.

The signature pad is now available to use on this PostalMate station.

